

## Subject: Tyre noise Regulations and Directives

Issued: 9<sup>th</sup> June 2010

Reviewed:

There has been considerable uncertainty in the market regarding the various Directives and Regulations concerning tyre noise limits. In order to clarify the situation here is a summary of the legal requirements applicable over the next few years.

In the UK **EC Directive 2001/43/EC** enters progressively into effect according to the following timetable. From these dates **all tyres sold or entering service in the UK market** must carry the appropriate marking.

### **From 23<sup>rd</sup> March 2010:**

Tyres class C1 (ECE-R 30) = **passenger tyres** of width  $\leq 185\text{mm}$ ,

Tyres class C2 (ECE-R 54) = **small commercial tyres** with Load Index (single)  $\leq 121$  and Speed Symbol  $\geq \text{N}$ ,

Tyres class C3 (ECE-R 54) = **commercial tyres** with Load Index (single)  $\geq 122$  or with Load Index (single)  $\leq 121$  and Speed Symbol  $\leq \text{M}$

### **From 1<sup>st</sup> October 2010**

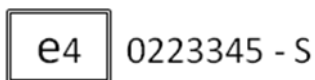
Tyres class C1 (ECE-R 30) = **passenger tyres** of width  $195 \leq w \leq 215 \text{ mm}$

### **From 1<sup>st</sup> October 2011**

Tyres class C1 (ECE-R 30) = **passenger tyres**, width  $> 215 \text{ mm}$

To comply with current and imminent UK requirements on Tyre noise, tyres may be approved to either EC Directive 2001/43/EC or UN/ECE Regulation 117. Hence tyres may be marked on the sidewall in a variety of different ways.

Tyres compliant with **2001/43/EC** should be marked on the sidewall as shown in the example below:



*Note the number 4 shown in the box is an example only and the actual number will be dependent upon which Contracting Party (Country) has approved the product*

### **UN/ECE Regulation 117**

This regulation initially covered approval of tyres with regard to rolling sound emissions, and has been amended to cover adhesion on wet surfaces (wet adhesion applies to C1-passenger car tyres only).

As with EC Directive 2001/43/EC noise limits by tyre type and size are specified within Reg. 117 and mirror those in the directive.

By implication tyres which are approved to the noise section of Regulation 117 will automatically comply with EC Directive 2001/43/EC.

Tyres compliant with Reg 117 should be marked on the sidewall as shown in the examples below:

#### Example 1



Example 1 shows approval to Reg 117 in its original form – denoted by '00' as the first two digits of the approval number.

The comments in this Position Statement are based on the general operating practices and environment found in the United Kingdom and the Republic of Ireland. No undertaking express or implied is given regarding the applicability of these comments to other operating environments. No part of this publication may be reproduced, stored in a retrieval system, or transmitted in any form or by any means, mechanical, photocopying, recording or otherwise, without the prior permission in writing of the publisher.

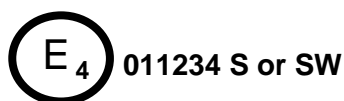
Although great care has been taken in the compilation and preparation of this Position Statement to ensure accuracy, the publisher cannot in any circumstances accept responsibility for errors or omissions or advice given in this publication.

## Subject: Tyre noise Regulations and Directives

Issued: 9<sup>th</sup> June 2010

Reviewed:

### Example 2



Example 2 shows approval to Reg 117 in its amended form, marked with 'S' for rolling sound or 'SW' to indicate approval for rolling sound and wet grip. The first two digits of the approval number '01' indicate approval to the 01 series of amendments.

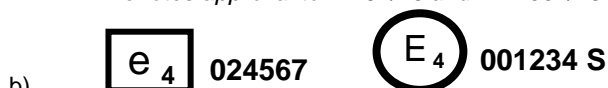
All tyres of classes C1 (Passenger), C2 (Light Commercial) and C3 (Heavy Commercial) must show approval to Directive 92/23 [e-marking] or Reg 30 (C1), Reg 54 (C2 and C3) – [E-marking].

Rolling Sound Approval is to be marked in addition to these markings.

Possible Combinations for C1 (Passenger) tyres



*Denotes approval to Dir 92/23 and Dir 2001/43*



*Denotes approval to Dir 92/23 and Reg 117*



*Denotes approval to Reg 30 and Dir 2001/43*



*Denotes approval to Reg 30 and Reg 117*



*Denotes approval to Reg 30 extended to show approval to Reg 117, the '01' shows approval to the first series of amendments of Reg 117.*

For C2 (Light commercial) and C3 (Heavy commercial) tyres the Reg 30 approval number would be replaced by the appropriate Reg 54 approval number and would start with the digits '00'.

NOTE: The shape of the symbol within which is contained the "e" or "E" number denotes if the compliance is given under a directive or a regulation e.g.



Denotes compliance to an EC Directive



Denotes compliance to a UN/ECE Regulation

The comments in this Position Statement are based on the general operating practices and environment found in the United Kingdom and the Republic of Ireland. No undertaking express or implied is given regarding the applicability of these comments to other operating environments. No part of this publication may be reproduced, stored in a retrieval system, or transmitted in any form or by any means, mechanical, photocopying, recording or otherwise, without the prior permission in writing of the publisher.

Although great care has been taken in the compilation and preparation of this Position Statement to ensure accuracy, the publisher cannot in any circumstances accept responsibility for errors or omissions or advice given in this publication.